

# PROJECT : Spade Lane Distribution Centre - Sittingbourne

## Client

Spade Lane  
Distribution Centre

## Contractor:

C&W Industrial Roofing

## Materials & Inspection:

Approved Delvemade Distributor

## Project Size:

32,500 m<sup>2</sup>

## Products Used:

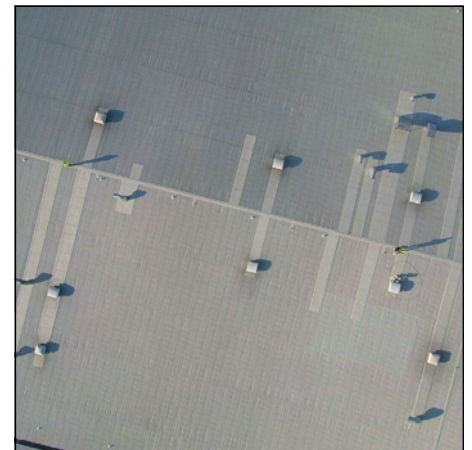
**SEAMSIL**® Top Coat - 412 litres of the UK's leading Cut Edge Corrosion Treatment - gun applied.

**SEAMSIL**® Basecoat - 1,960 litres - brush applied.

**DELCOTE**® 25,000 litres of Goosewing Grey (Delvemade's most popular colour) - spray coated.

## Specification:

The Delcote specification includes the use of Seamsil to treat sheet cut edge corrosion and encapsulation of all sheet fixings. It was considered the best most cost effective refurbishment option for this project. The contract was awarded to C&W Industrial Roofing of Colchester.



Telephone: + 44 (0)1204 868604

Email: [contact@delvemade.com](mailto:contact@delvemade.com)

[www.delvemade.co.uk](http://www.delvemade.co.uk)

PERFORMANCE COATINGS

Manufactured by

**Delvemade**

Specify Delvemade products by name • Seamsil • Delcote • Delcote GS • Delglaze

